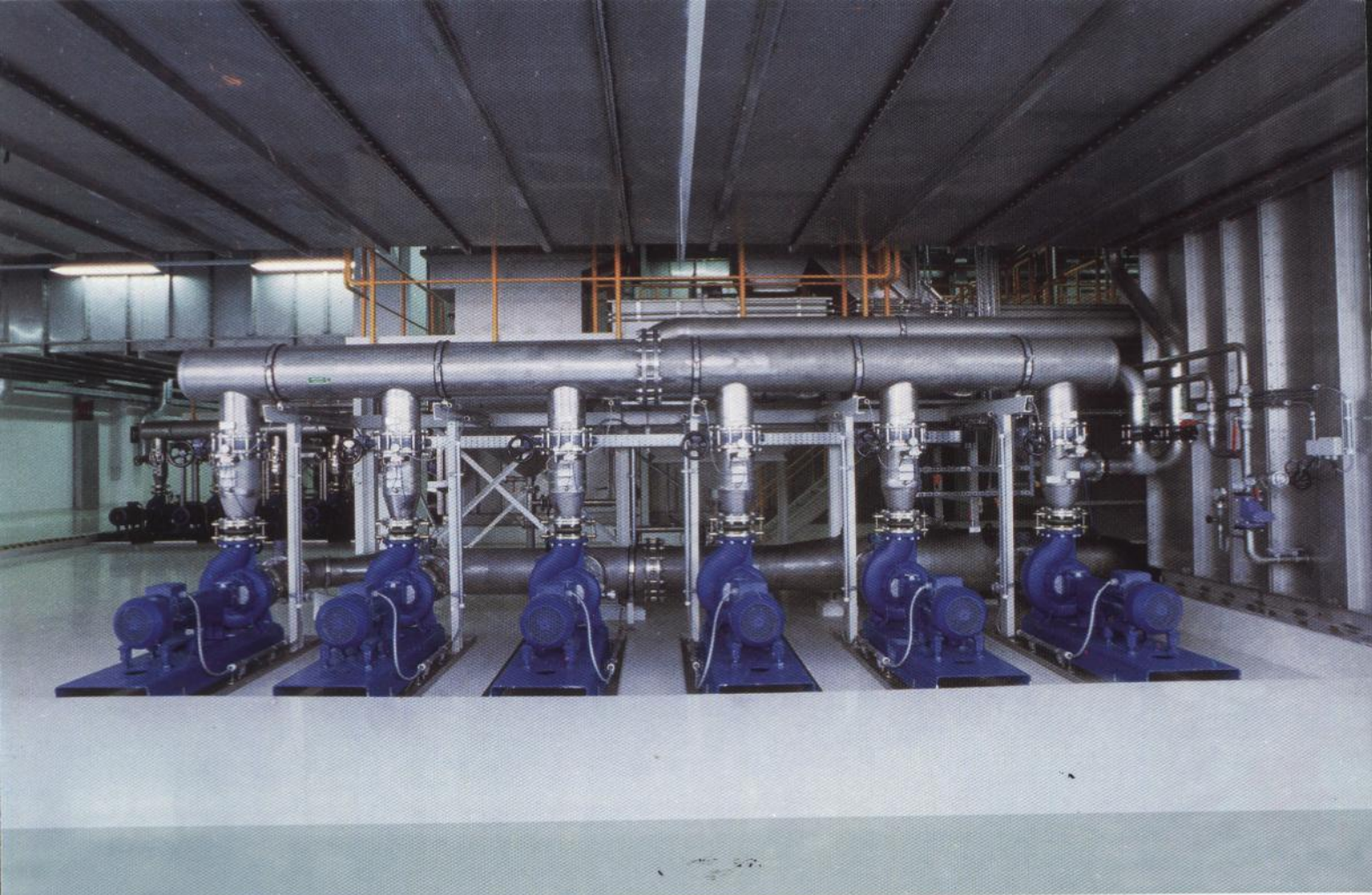


Etanorm

Our global best seller



- | | | |
|----------------------|---|------------------------------------|
| Improved Hydraulic | → | Higher Efficiencies |
| Back Pull-Out Design | → | Easy Maintenance |
| Wear Rings | → | Lower Operating & Maintenance Cost |



ETANORM by KSB

Our global best seller

Pump drive. Pump control. Pump expert

Our lead in experience has enabled us to develop our Eta family into its next generation; Etanorm, assuring unmatched value offerings. Its modular design provides flexibility to choose features that perfectly match your needs. In addition to this, Etanorm offers higher efficiencies, reduced operating costs and easy maintenance in comparison to its predecessor.

All this is achieved through smart technology built into the product.

- Optimized hydraulics enhance the product efficiency delivering better flow and pressure with lower power consumption
- Addition of wear rings on the impeller offers possibility to reduce maintenance costs yet enabling the product to maintain its design efficiency.
- Back pull-out design offers easy and faster dismantling and re-assembly

Etanorm can be packaged with automation options like pump drive, pump control and pump expert. These automation features help in the pump speed adjustment and control for varying demands and features for moni-

A successful track record of over seventy years but still young at heart; KSB's Eta family combines innovation with tradition, offering a range that our customers across the world have relied on for all these years.



Etanorm-your dependable pumping solution!

Standard-complaint

Connecting dimensions and ratings as per EN 733

Service-friendly and wear-resistant

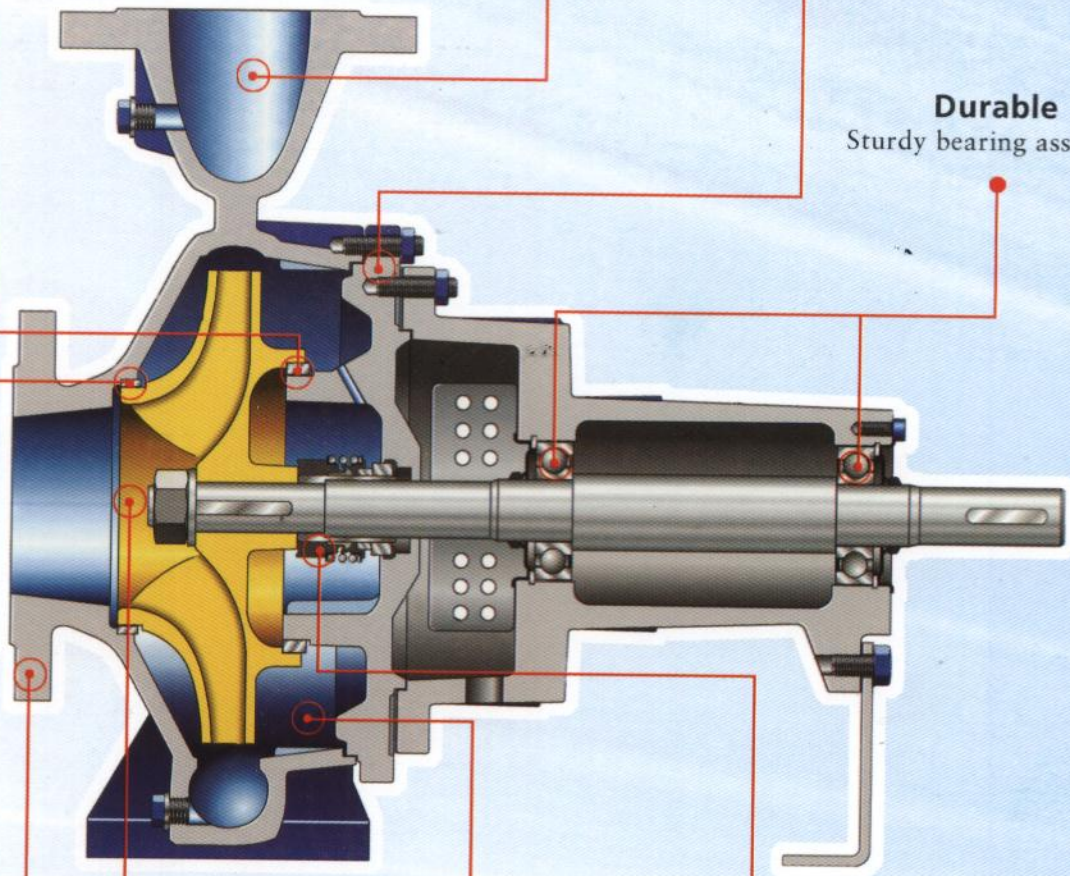
Replaceable wear rings

Easy to dismantle

Back pull-out design: pump casing remains in the pipeline

Durable

Sturdy bearing assembly



Versatile

Wide selection of materials for all fields of application

Economical and Maintenance-free

Uncooled shaft seal, no cooling water required

Energy-saving
Optimized hydraulics with high efficiency

Reliable
Rated up to 16 bar

Technical Data

Applications

- Water supply
- Fire-fighting systems
- Spray irrigation
- Irrigation
- Drainage
- Air-conditioning
- Drinking water
- Industrial water
- Hot water
- Cooling water
- Swimming-pool water
- Brackish water
- Brine
- Oils
- Cleaning agents

Operating data

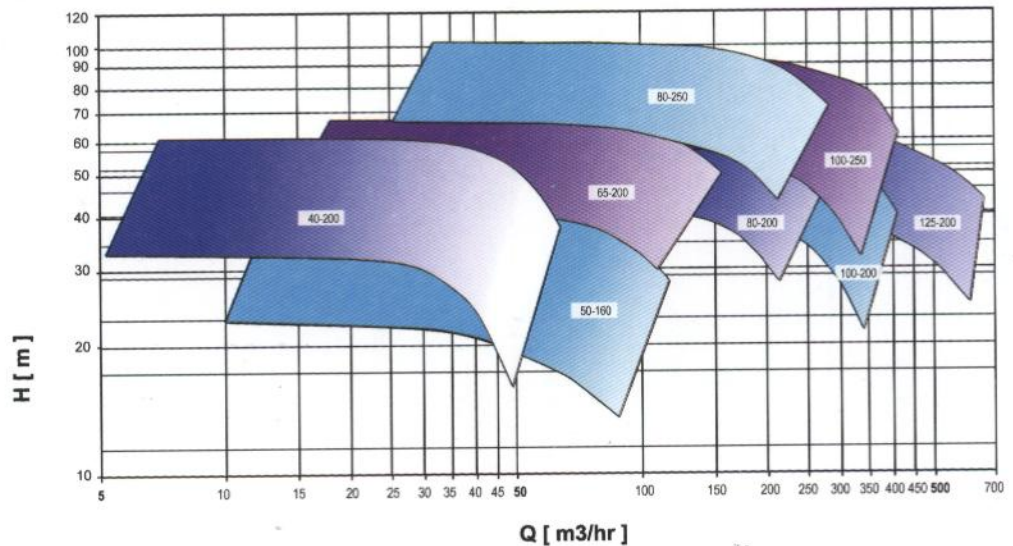
- Q up to 600 m³/h
- H up to 102 m
- t -30°C to +140°C
- p₂ up to 16 bar

Design

Horizontal volute casing pump, single-stage with power ratings and main dimensions to EN 733 with bearing bracket, in back pull-out design. Shaft with replaceable shaft sleeve/shaft protecting sleeve in the shaft seal area. Volute casing and impeller with replaceable wear rings. Volute casing with integrally cast pump feet.

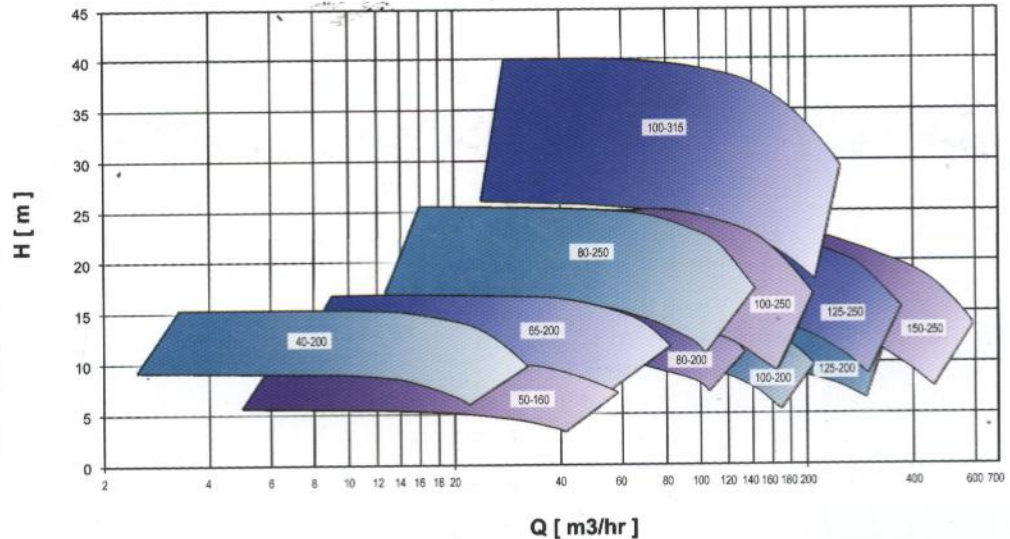
Etanorm

n = 2900 1/min



Etanorm

n = 1450 1/min



Materials

Parts	Etanorm G	Etanorm M
Volute casing	Grey cast iron JL 1040	Grey cast iron JL 1040
Discharge cover	Grey cast iron JL 1040	Grey cast iron JL 1040
Impeller	Grey cast iron JL 1040	Tin bronze CC 480 K-GS
Wear ring	Grey cast iron GG	Grey cast iron/Leaded bronze CC 495 K-GS
Shaft	Tempering steel C45	Tempering steel C45
Shaft sleeve	Chrome nickel molybdenum steel 1.4571	Chrome nickel molybdenum steel 1.4571
Shaft protection sleeve	Chrome nickel molybdenum steel 1.4122	Chrome nickel molybdenum steel 1.4122
Bearing bracket	Grey cast iron JL 1040	Grey cast iron JL 1040